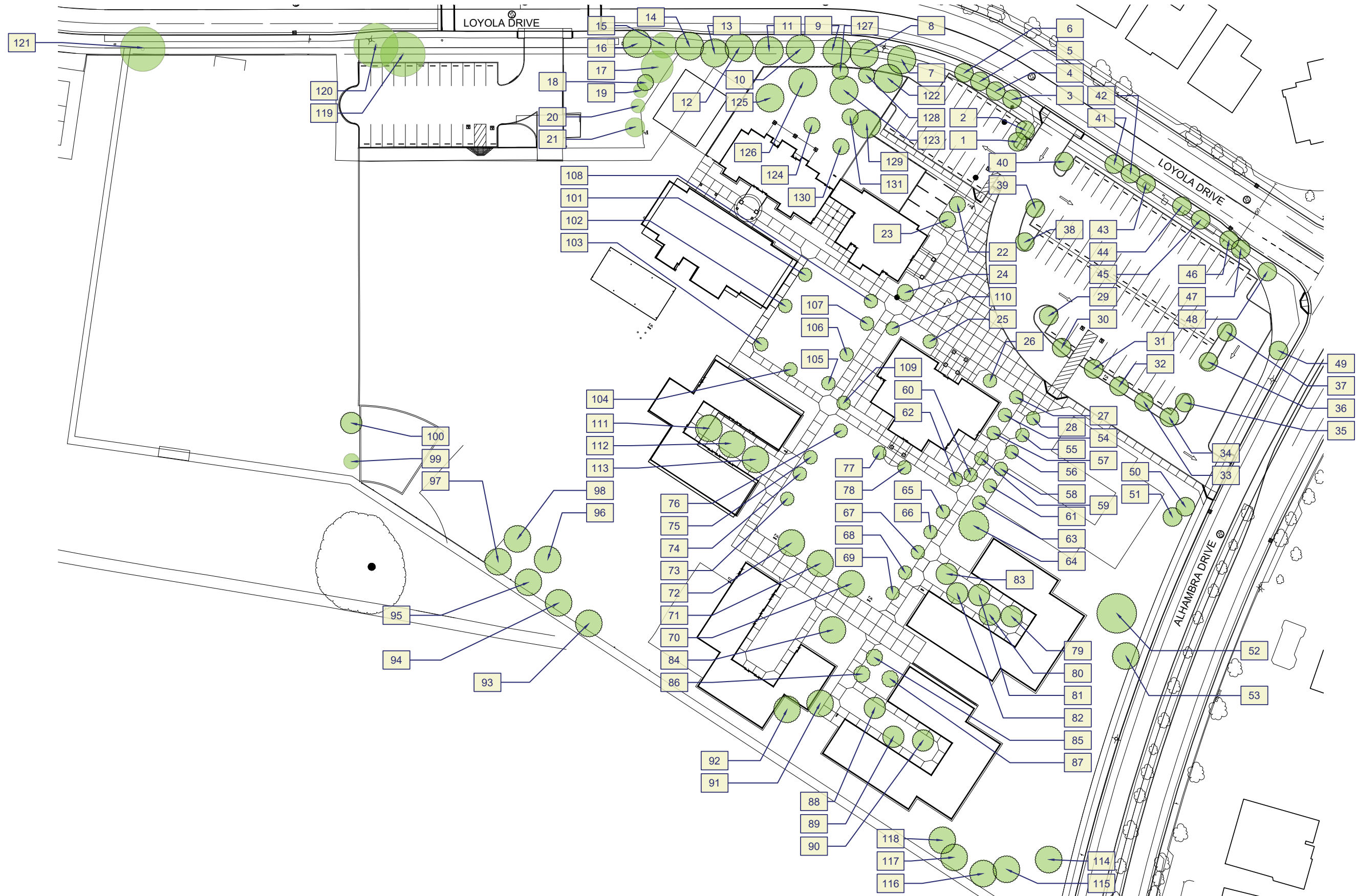


**Fred T. Korematsu Elementary School**  
3100 Loyola Dr, Davis, CA 95618



## Tree Data

ID	Tree species - Common Name	Botanical Name	Deciduous/ Evergreen	Approx. Height Range (ft)	Approx. Canopy Width (ft)	Trunk Size DBH (in)	Observable Health Condition	Notes
K-1	Eastern Redbud	<i>Cercis canadensis</i>	Deciduous	21	10	4	No observable problems	
K-2	Eastern Redbud	<i>Cercis canadensis</i>	Deciduous	16	8	3	Trunk and canopy appear to be dying	Recommend arborist review and possible removal
K-3	Eastern Redbud	<i>Cercis canadensis</i>	Deciduous	18	10	4	No observable problems	
K-4	Redwood	<i>Sequoia sempervirens</i>	Evergreen	39	18	15	No observable problems	
K-5	Redwood	<i>Sequoia sempervirens</i>	Evergreen	40	18	16	No observable problems	
K-6	Redwood	<i>Sequoia sempervirens</i>	Evergreen	35	16	13	Thinning of canopy	
K-7	London Plane	<i>Platanus x acerifolia</i>	Deciduous	31	26	10	Some surface roots	
K-8	London Plane	<i>Platanus x acerifolia</i>	Deciduous	39	26	10	Some surface roots	
K-9	London Plane	<i>Platanus x acerifolia</i>	Deciduous	38	26	9	Surface rooting	
K-10	London Plane	<i>Platanus x acerifolia</i>	Deciduous	31	23	10	Surface roots, creeping fig on trunk	Remove creeping fig from trunk
K-11	London Plane	<i>Platanus x acerifolia</i>	Deciduous	36	18	9	Surface roots, creeping fig climbing trunk	Remove creeping fig from trunk
K-12	London Plane	<i>Platanus x acerifolia</i>	Deciduous	51	23	13	No observable problems	
K-13	London Plane	<i>Platanus x acerifolia</i>	Deciduous	36	16	8	Trunk damage at base appears to be healing, surface roots, suckering at base	
K-14	London Plane	<i>Platanus x acerifolia</i>	Deciduous	34	10	8	Surface rooting	
K-15	London Plane	<i>Platanus x acerifolia</i>	Deciduous	34	16	8	Surface rooting	
K-16	London Plane	<i>Platanus x acerifolia</i>	Deciduous	39	16	8	No observable problems	
K-17	Purple leaf plum	<i>Prunus cerasifera</i> 'Atropurpurea'	Deciduous	26	18	10	Suckering at base and in canopy	Sucker pruning needed
K-18	Purple leaf plum	<i>Prunus cerasifera</i> 'Atropurpurea'	Deciduous	23	13	7	No observable problems	
K-19	Purple leaf plum	<i>Prunus cerasifera</i> 'Atropurpurea'	Deciduous	23	13	7	Some suckering at base	
K-20	Robinia Purple Robe	<i>Robinia</i> 'Purple Robe'	Deciduous	34	13	4	No observable problems	1/2" Thorns on trunk and branches
K-21	Robinia Purple Robe	<i>Robinia</i> 'Purple Robe'	Deciduous	34	23	4	Multistem, suckering, dead initial tree, all new trunk come from surface root of dead tree	
K-22	Crape myrtle	<i>Lagerstroemia indica</i>	Deciduous	13	8	2	Some suckering at base	
K-23	Crape myrtle	<i>Lagerstroemia indica</i>	Deciduous	12	7	2	Suckering at base	
K-24	Crape myrtle	<i>Lagerstroemia indica</i>	Deciduous	13	7	2	No observable problems	
K-25	Crape myrtle	<i>Lagerstroemia indica</i>	Deciduous	13	7	2	Suckering at base	
K-26	Crape myrtle	<i>Lagerstroemia indica</i>	Deciduous	13	7	2	Suckering at base	
K-27	Cherry	<i>Prunus</i>	Deciduous	13	8	5	Trunk bark defoliation on south side, suckering at base	
K-28	Cherry	<i>Prunus</i>	Deciduous	21	10	7	No observable problems	
K-29	Crape myrtle	<i>Lagerstroemia indica</i>	Deciduous	6	4	1	No observable problems	
K-30	Crape myrtle	<i>Lagerstroemia indica</i>	Deciduous	14	10	2	Suckering at base, arborguard growing into trunk at base	
K-31	Crape myrtle	<i>Lagerstroemia indica</i>	Deciduous	12	10	2	Suckering at base	
K-32	Crape myrtle	<i>Lagerstroemia indica</i>	Deciduous	17	13	4	No observable problems	

Data Collection - Fred T. Korematsu Elementary School - Tree Data

K-33	Crape myrtle	Lagerstroemia indica	Deciduous	12	10	3	Suckering at base	Remove arborguard
K-34	Crape myrtle	Lagerstroemia indica	Deciduous	16	14	4	Suckering at base	
K-35	Crape myrtle	Lagerstroemia indica	Deciduous	10	5	2	No observable problems	
K-36	Crape myrtle	Lagerstroemia indica	Deciduous	18	13	4	Suckering at base	
K-37	Crape myrtle	Lagerstroemia indica	Deciduous	13	8	3	No observable problems	
K-38	Crape myrtle	Lagerstroemia indica	Deciduous	16	12	3	Suckering at base	
K-39	Crape myrtle	Lagerstroemia indica	Deciduous	14	10	3	Suckering at base	
K-40	Eastern Redbud	Cercis canadensis	Deciduous	16	12	2	No observable problems	
K-41	Eastern Redbud	Cercis canadensis	Deciduous	12	4	1	Main trunk appears dead	
K-42	Red Maple	Acer rubrum	Deciduous	21	10	4	Suckering at base, surface roots	
K-43	Red Maple	Acer rubrum	Deciduous	21	13	5	No observable problems	
K-44	Red Maple	Acer rubrum	Deciduous	22	10	4	Some surface roots	
K-45	Red maple	Acer rubrum	Deciduous	23	13	5	Some surface roots	
K-46	Red Maple	Acer rubrum	Deciduous	26	13	6	Some surface roots	
K-47	Red Maple	Acer rubrum	Deciduous	23	10	5	Surface rooting	
K-48	Red Maple	Acer rubrum	Deciduous	23	13	5	Surface rooting	
K-49	Eastern Redbud	Cercis canadensis	Deciduous	17	10	5	Bark sloughing on trunk with dead wood underneath	Recommend arborist review
K-50	Dessert Willow	Chilopsis linearis	Deciduous	27	23	12	Significant trunk damage, sloughing bark	
K-51	Ornamental Pear	Pyrus calleryana	Deciduous	21	21	8	Main trunk damage into canopy, bark sloughing from trunk of tree into canopy	
K-52	Valley oak	Quercus lobata	Deciduous	42	34	0	No observable problems	
K-53	Ornamental Pear	Pyrus calleryana	Deciduous	21	20	0	Bark damage at base of trunk	
K-54	Cherry	Prunus	Deciduous	1	7	1	No observable problems	
K-55	Autumnalis flowering cherry	Prunus subhirtella 'Autumnalis	Deciduous	9	8	1	No observable problems	
K-56	Cherry	Prunus	Deciduous	12	10	2	No observable problems	
K-57	Yoshino flowering cherry	Prunus x yedoensis	Deciduous	7	3	1	No observable problems	
K-58	Cherry	Prunus	Deciduous	9	8	2	No observable problems	
K-59	Cherry	Prunus	Deciduous	5	4	2	Suckering at base	
K-60	Cherry	Prunus	Deciduous	16	5	4	Significant trunk ark damage	
K-61	Yoshino flowering Cherry	Prunus x yedoensis	Deciduous	11	12	2	No observable problems	
K-62	Cherry	Prunus	Deciduous	11	8	1	No observable problems	
K-63	Cherry	Prunus	Deciduous	13	12	2	No observable problems	Remove stakes
K-64	Chinese Elm	Ulmus parvifolia	Deciduous	26	21	6	Several broken branches in canopy need pruning	
K-65	Golden Rain Tree	Koelreuteria paniculata	Deciduous	8	1	1	No observable problems	
K-66	Blue Oak	Quercus douglasii	Deciduous	10	4	1	No observable problems	
K-67	Blue Oak	Quercus douglasii	Deciduous	6	1	1	No observable problems	
K-68	Black Walnut	Juglans nigra	Deciduous	13	7	3	Some trunk damage at base appears to be healing	
K-69	Black Walnut	Juglans nigra	Deciduous	18	12	4	Mistletoe	
K-70	Ornamental Pear	Pyrus calleryana	Deciduous	22	9	5	No observable problems	
K-71	Blue Oak	Quercus douglasii	Deciduous	7	1	1	No observable problems	
K-72	Ornamental Pear	Pyrus calleryana	Deciduous	34	14	9	No observable problems	

K-73	Texas Red Oak	Quercus buckleyi	Deciduous	6	3	1	No observable problems	
K-74	Sawleaf Zelkova	Zelkova serrata	Deciduous	16	10	3	No observable problems	
K-75	Blue Oak	Quercus douglasii	Deciduous	8	1	1	No observable problems	
K-76	Golden Rain Tree	Koelreuteria paniculata	Deciduous	12	1	1	No observable problems	
K-77	Persian Spire Ironwood	Parrotia persica "JL Columnar"	Deciduous	6	3	1	No observable problems	
K-78	Persian Spire Ironwood	Parrotia persica "JL Columnar"	Deciduous	6	1	1	No observable problems	
K-79	Chinese Pistache	Pistacia chinensis	Deciduous	21	14	6	Surface roots	
K-80	Chinese Pistache	Pistacia chinensis	Deciduous	20	13	4	No observable problems	
K-81	Chinese Pistache	Pistacia chinensis	Deciduous	23	13	6	Surface roots	
K-82	Chinese Pistache	Pistacia chinensis	Deciduous	21	13	4	Surface roots	
K-83	Chinese Pistache	Pistacia chinensis	Deciduous	18	13	5	No observable problems	
K-84	Chinese elm	Ulmus parvifolia	Deciduous	21	22	5	Significant canopy breakage, Surface roots, Broken branches in canopy need pruning	Recommend arborist review
K-85	London Plane	Platanus x acerifolia	Deciduous	16	8	3	No observable problems	
K-86	London Plane	Platanus x acerifolia	Deciduous	18	9	2	No observable problems	Remove stake
K-87	Tulip Tree	Liriodendron tulipifera	Deciduous	40	18	13	No observable problems	
K-88	Chinese Pistache	Pistacia chinensis	Deciduous	20	10	5	Surface roots	
K-89	Chinese Pistache	Pistacia chinensis	Deciduous	12	7	2	No observable problems	Bench secured to trunk
K-90	Chinese Pistache	Pistacia chinensis	Deciduous	18	12	5	Surface roots	
K-91	Plum	Prunus	Deciduous	12	12	2	Suckering at base	Remove stake
K-92	Persimmon	Diospyros virginiana	Deciduous	18	12	4	Cross branching in canopy could be pruned up	Volunteer live oak growing beneath/thru canopy
K-93	Dessert Willow	Chilopsis linearis	Deciduous	23	18	9	Surface roots, suckering at base, significant trunk bark damage	Recommend arborist review
K-94	Dessert Willow	Chilopsis linearis	Deciduous	20	17	8	Suckering at base, some bark damage in canopy	
K-95	Chinese elm	Ulmus parvifolia	Deciduous	22	22	7	No observable problems	
K-96	Chinese elm	Ulmus parvifolia	Deciduous	21	12	4	No observable problems	
K-97	Chinese elm	Ulmus parvifolia	Deciduous	20	12	5	No observable problems	
K-98	Chinese elm	Ulmus parvifolia	Deciduous	21	14	5	No observable problems	
K-99	Chinese elm	Ulmus parvifolia	Deciduous	23	17	5	No observable problems	
K-100	Chinese elm	Ulmus parvifolia	Deciduous	26	20	6	Surface roots	
K-101	Maidenhair Tree	Ginkgo biloba	Deciduous	6	1	1	No observable problems	
K-102	Black Walnut	Juglans nigra	Deciduous	14	7	3	No observable problems	
K-103	Maidenhair Tree	Ginkgo biloba	Deciduous	6	1	1	No observable problems	
K-104	Ornamental Pear	Pyrus calleryana	Deciduous	21	10	5	No observable problems	
K-105	Chinese Pistache	Pistacia chinensis	Deciduous	14	3	1	No observable problems	
K-106	Chinese Pistache	Pistacia chinensis	Deciduous	12	5	1	Some trunk damage at base	
K-107	Chinese Pistache	Pistacia chinensis	Deciduous	12	1	1	No observable problems	
K-108	Texas Red Oak	Quercus buckleyi	Deciduous	6	1	1	No observable problems	Sapling
K-109	Crape myrtle	Lagerstroemia indica	Deciduous	12	8	3	Suckering at base	
K-110	Crape myrtle	Lagerstroemia indica	Deciduous	11	7	2	No observable problems	
K-111	Chinese Pistache	Pistacia chinensis	Deciduous	29	18	9	Surface roots	

Data Collection - Fred T. Korematsu Elementary School - Tree Data

K-112	Chinese Pistache	<i>Pistacia chinensis</i>	Deciduous	23	14	7	Surface roots	
K-113	Chinese Pistache	<i>Pistacia chinensis</i>	Deciduous	22	16	7	No observable problems	
K-114	<i>Cedrus deodora</i>	Deador Cedar	Evergreen	22	14	7	None	
K-115	<i>Cedrus deodora</i>	Deador Cedar	Evergreen	42	28	13	None	
K-116	<i>Cedrus deodora</i>	Deador Cedar	Evergreen	39	20	8	Damage to bark	
K-117	<i>Cedrus deodora</i>	Deador Cedar	Evergreen	39	20	9	None	
K-118	<i>Cedrus deodora</i>	Deador Cedar	Evergreen	42	22	11	None	
K-119	Red Maple	<i>Acer rubrum</i>	Deciduous	34	8	5	Damage to trunk from construction	
K-120	Red Maple	<i>Acer rubrum</i>	Deciduous	34	11	5	Damage to trunk from construction	
K-121	London Plane	<i>Platanus x acerifolia</i>	Deciduous	64	31	14	Damage to trunk from construction	
K-122	Chinese Pistache	<i>Pistacia chinensis</i>	Deciduous	31	23	7	Damage to trunk from construction	
K-123	Evergreen Pear	<i>Pyrus kawakamii</i>	Evergreen	21	18	5	Surface roots	
K-124	Evergreen Pear	<i>Pyrus kawakamii</i>	Evergreen	21	16	5	Surface roots	
K-125	Evergreen Pear	<i>Pyrus kawakamii</i>	Evergreen	29	21	10	Surface roots	
K-126	Evergreen Pear	<i>Pyrus kawakamii</i>	Evergreen	23	21	9	Surface roots	
K-127	Asian Pear	<i>Pyrus sp.</i>	Deciduous	16	5	3	Surface roots	
K-128	Peach	<i>Prunus persica</i>	Deciduous	6	8	1	Surface roots	Multi (2)
K-129	Chinese Pistache	<i>Pistacia chinensis</i>	Deciduous	10	23	8	Surface roots	
K-130	Ginkgo	<i>Ginkgo biloba</i>	Deciduous	7	1.5	1	Surface roots	
K-131	Fruit Tree	<i>Prunus</i>	Deciduous	4	1	1	Surface roots	